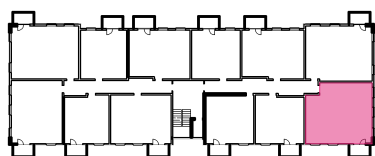
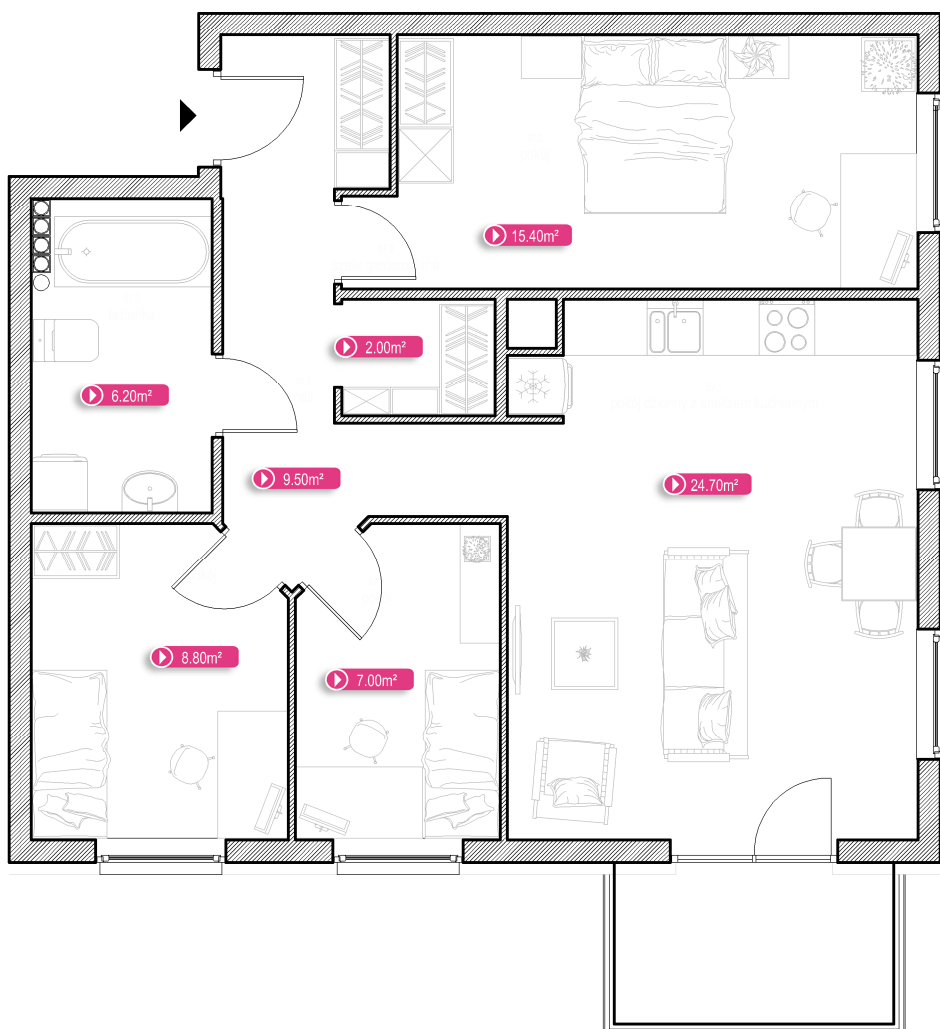


▶ Piętro 4 Lokal J.57 Pow. użytkowa 73.60m<sup>2</sup> Pd Pn W



pokój dzienny z aneksem kuchennym	24.70m <sup>2</sup>
pokój	15.40m <sup>2</sup>
szafa garderobiana	2.00m <sup>2</sup>
hall	9.50m <sup>2</sup>
łazienka	6.20m <sup>2</sup>
pokój	8.80m <sup>2</sup>
pokój	7.00m <sup>2</sup>
<b>Suma</b>	<b>73.60m<sup>2</sup></b>